

ATTACHMENT 9

FINAL SITE PLAN (PUD AND SITE CONDO)

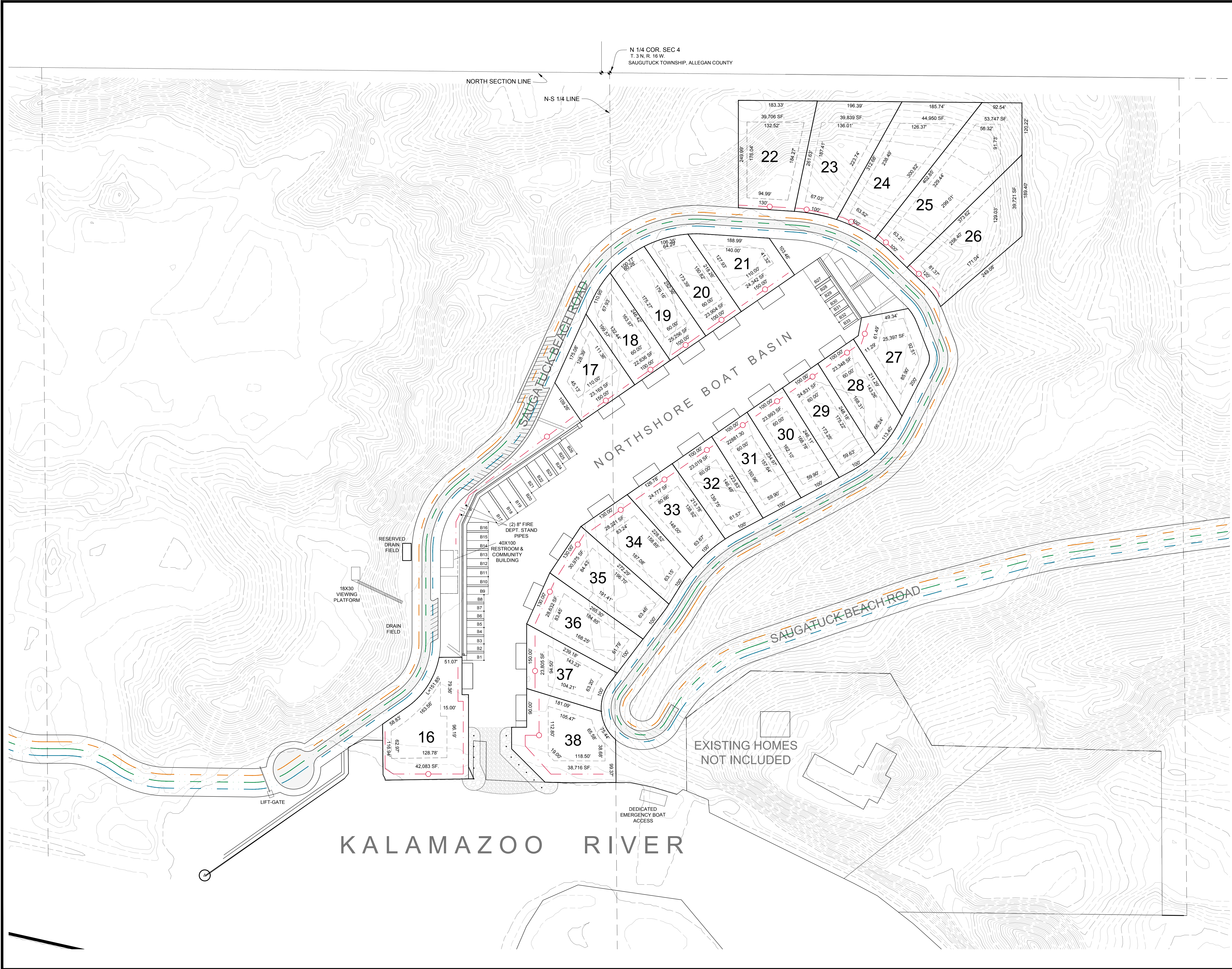


PREPARED FOR: **NORTHSHORES OF SAUGATUCK, LLC.**
 PROJECT NO. **16-1041** DATE **06-26-17**
 BOOK **FILE** PAGE **FILE** REVISION **FILE**
 DRAWN BY **E. MORSE** SHEET **OF 1** **2**

NORTHSHORES OF SAUGATUCK

MITCHELL & MORSE LAND SURVEYING
 234 VETERANS BLVD., SOUTH HAVEN, MICHIGAN 49080
 OFFICE (689) 657-1107 FAX (689) 657-1007

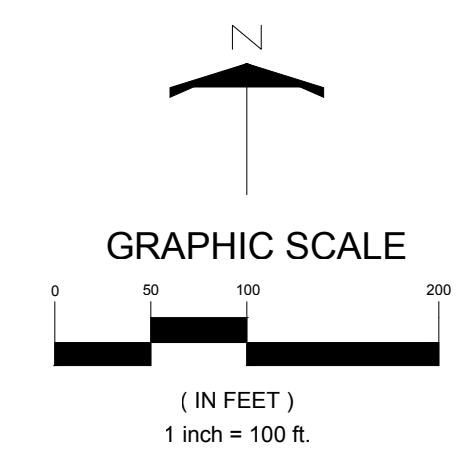
- KEY PLAN**
- SITE CONDO LINE
 - GENERAL COMMON ELEMENT (OPEN SPACE)
963,698 SF. LAND
186,718 SF. WATER
 - GENERAL COMMON ELEMENT
 - LIMITED COMMON ELEMENT
 - BOAT SLIP UNITS



SITE CONDO TOTAL	
ACRES	SQ. FOOTAGE
50.95	2,221,428 SF.

GENERAL COMMON OPEN SPACE TOTAL	
ACRES	SQ. FOOTAGE
26.4	1,150,416 SF.

RESIDENTIAL CONDOMINIUM LOT SIZE	
UNIT	SQ. FOOTAGE
16	42,082
17	23,163
18	22,636
19	25,256
20	23,903
21	24,341
22	39,706
23	39,839
24	44,950
25	53,747
26	39,721
27	21,237
28	23,348
29	24,831
30	23,992
31	22,881
32	23,018
33	24,777
34	28,221
35	30,975
36	28,632
37	23,805
38	38,715
TOTAL	693,876 SF.



- SITE UTILITY KEY PLAN
- GAS LINE
 - ELECTRICAL CONDUIT
 - DATA CONDUIT
 - STORM DRAIN W/ SOCK

*CONTOURS SHOWN AT 1'-0" INTERVALS